



Ecophysiological Contributions of *Enchytraeus albidus* to Soil Carbon Turnover and Nutrient Transformation Processes

P C J Beare

Institute of Ecology, University of Georgia, Athens, Georgia, USA

* Corresponding Author: P C J Beare

Article Info

P-ISSN: 3051-3448

E-ISSN: 3051-3456

Volume: 07

Issue: 01

Received: 08-01-2026

Accepted: 10-02-2026

Published: 12-03-2026

Page No: 31-44

Abstract

Background: *Enchytraeus albidus* (Oligochaeta: Enchytraeidae) is a vital soil mesofauna species that significantly influences carbon and nutrient cycling in terrestrial ecosystems, playing an essential role in soil biogeochemical processes.

Objective: This study seeks to assess the ecophysiological role of *E. albidus* in soil systems by integrating evidence from experimental studies to elucidate its contribution to organic matter decomposition, nutrient transformations, and ecosystem functioning.

Methods: Data were gathered from microcosm, mesocosm, and field experiments utilizing controlled worm density incubations, stable isotope tracer techniques (^{13}C and ^{15}N), fluorometric enzyme assays, microbial community analysis, and high-throughput sequencing to evaluate interactions between *E. albidus* and soil microbiota.

Results: *E. albidus* significantly improved the breakdown of organic matter and sped up microbial decomposition by moving through the gut, which increased the amount of CO_2 that escaped from the soil by 15–30%. Ammonium excretion and proteolytic activity increased nitrogen mineralization rates by 20–40%, and phosphatase production improved phosphorus mobilization. *E. albidus*'s bioturbation made nutrient-rich hotspots, where cast materials had 2 to 5 times more mineral nitrogen than the soil around them. But environmental stressors like high temperatures, heavy metal pollution, and soil acidification made it work less well.

Conclusion: *E. albidus* is important for keeping the soil ecosystem working by controlling the flow of nutrients and the activity of microbes. Its ecological significance emphasizes the necessity of integrating enchytraeid dynamics into biogeochemical models and sustainable soil management strategies, especially in the context of evolving environmental conditions.

DOI: <https://doi.org/10.54660/JSFR.2026.7.1.31-44>

Keywords: *Enchytraeus albidus*, potworms, enchytraeids, soil mesofauna, carbon turnover, nutrient mineralization, bioturbation, soil respiration, microbial priming, sustainable soil management

1. Introduction

1.1. Biology and Taxonomic Classification of *Enchytraeus albidus*

The family Enchytraeidae contains the class Oligochaeta and represents an organism that is referred to as a potworm or white worm (*E. albidus*) and is a very important part of the soil mesofauna that exists within many different habitats on land (Didden, 1993) ^[1] (Wesemael *et al.*, 2010) ^[2]. The body of *E. albidus* ranges from approximately 5–30 mm long by approximately 0.2–0.8 mm wide; its colour is white and transparent. *E. albidus* is hermaphroditic, cocoons are formed as a result of reproduction. Each individual can produce 2–8 cocoons each reproductive cycle, but this is best accomplished under optimal conditions (Rønn *et al.*, 1995) ^[3] (Schmelz and Collado, 2010) ^[4]. Temperature, moisture and food availability have a significant impact on the life history characteristics of *E. albidus*. The life history characteristics of *E. albidus* will help us understand environmental changes; and therefore, give us an indicator species for ecological monitoring (Ivleva, 1981) ^[5].

E. albidus has a well-developed structural organisation, which includes a well-developed digestive tract that has a muscular pharynx, a simple intestine and glandular structures associated with digestive enzymes that will facilitate digestion of food (Briones and Ineson, 1996) ^[6]. *E. albidus* has a nephridial system that supports excretion of waste and maintains osmotic control while the body wall has a high blood flow and will allow *E. albidus* to absorb gases (oxygen and carbon dioxide) through its body. The morphological and physiological traits that *E. albidus* possess illustrate its adaptation to interstitial soil environments and define its ecological niche in the soil; and describe how it interacts with components within the soil matrix, organic materials and microbes within the soil (Lundkvist, 1983) ^[7].

1.2. Distribution and Habitat Preferences in Terrestrial Ecosystems

Enchytraeus albidus are globally present, found in temperate, boreal, and subarctic climates on all three continents, to include parts of Europe, North America, and Asia (Christensen, 2004) ^[8]. The species inhabits organic-rich, moist soils with intermediate pH/acidity; they live within the upper 0-15 cm of the soil profile, where there is a concentration of detrital input and microbial activity (Holmstrup, 2003) ^[9]. In suitable habitats *E. albidus* populations may reach densities of 300,000 individuals/m², thus enchytraeids are the most numerous members of soil fauna and frequently outnumber earthworm populations in cooler, acidic, and water-logged ecosystems (Standen, 1978) ^[10] (Petersen and Luxton, 1982) ^[11].

Environmental conditions impacting populations of *E. albidus* include soil moisture, temperature, and quality of organic matter. Populations of *E. albidus* thrive at temperatures of 10-15°C (50-59°F), and with soil water holding capacities between 60-80%. They possess the ability to tolerate periodic moisture deficits via behavioral avoidance of non-moist soils (Springett, 1983) ^[12]. *E. albidus* plays a disproportionately large functional role relative to its body mass in detrital processing and nutrient cycling compared to its size, operating in agricultural soils, forest litter layers, peatlands, and grassland ecosystems (Persson *et al.*, 1980) ^[13].

1.3. Role in Soil Food Webs and Detrital Pathways

The role of *Eudrilus albidus* as an intermediary target in the soil food web has been shown to be that it is both a primary (organics) and secondary (micro-organisms) consumer of organic matter and micro-organisms (Petersen and Luxton, 1982) ^[11]. *Eudrilus albidus* predominately consumes decaying plant litter, fungal hyphae, bacteria, algae, and soil-associated micro-organisms (Standen, 1978) ^[10]. *Eudrilus albidus* represents the connection between the detrital and micro-organismal food networks (Persson *et al.*, 1980) ^[13]. *Eudrilus albidus* also acts as prey to predatory nematodes, soil-dwelling beetles, Gamasida (mites) and centipedes and serves as part of the higher trophic pathways, adding to the efficiency of movement of energy at the higher levels of the food web (Huhta, 2007) ^[42].

Eudrilus albidus's role as a detrital processor is of particular importance in organic soils as well as forest ecosystems (trees) where earthworms have been restricted by soil acidity and/or moisture conditions, where it has been demonstrated that enchytraeids are the primary agents that process (commminute, fracture and integrate with the mineral

components of) the litter in the forest ecosystems thus helping to facilitate the process of humification of soil, resulting in the development of stable soil organic matter (Springett, 1983) ^[12].

Enchytraeids are functionally redundant with earthworms and Collembola in certain habitats but at the same time provide a unique function as part of soil ecosystems at other locations and therefore are a critical area of study both in the relationship between biological diversity and the function of soil ecosystems (Rusek, 1998) ^[41].

1.4. Importance in Carbon Cycling and Nutrient Dynamics

Soil fauna plays a vital role in the global carbon cycle, and the enchytraeid, *E. albidus*, has considerable impact within its functional group of organisms on carbon dynamics in terrestrial ecosystems (Doles *et al.*, 2001) ^[19]. Through a variety of methods (by physically breaking up organic substrates; stimulating microbial decomposition; through carbon dioxide release by respiration; and indirectly priming organic soil carbon for mineralisation), *E. albidus* contributes to soil carbon turnover and, together, these processes affect the balance between soil organic matter pool carbon stay stored (in soil) or lost (into the atmosphere). Ultimately, these effects contribute to, respectively, ecosystem carbon budgets and global climate change (Filser, 2002) ^[21].

Enchytraeids also have a large effect on the dynamics of nutrients, particularly nitrogen and phosphorus. By feeding on organic materials; through excretion processes involving anaerobic bacteria; and through their interaction with microflora and microfauna, *E. albidus* regulates the conversion of nutrient organically from vegetation into inorganic nutrients available to plants (Van Vliet *et al.*, 1995) ^[22]. As such, *E. albidus* is considered a keystone species for the biogeochemical structure of temperate soils and has relevance to both agricultural productivity and sustainable ecosystems and environmental quality measurements (Usher *et al.*, 1982) ^[23].

2. Ecophysiological Mechanisms

2.1. Feeding Behaviour and Substrate Preferences

The feeding ecology of *E. albidus* is characterized as having an extensive diet and is considered to be a generalist or an opportunistic omnivore because it gains food from several locations in its environment (soil) that are temporally and spatially variable (Cole *et al.*, 2002) ^[24]. Substrates are selected based on chemosensory cues and the physical characteristics of organic substrates; therefore, *E. albidus* shows a preference for substrates dominated by fungi rather than fresh plant matter. Fungal material has a higher nitrogen content and is more easily digested than plant matter (Scheu *et al.*, 2002) ^[25]. Experiments conducted with dual isotope labeling have also confirmed that *E. albidus* can differentiate between bacteria and fungi based on the biomarkers in its diet and selectively incorporate them into its body (Jänsch *et al.*, 2005) ^[26] (i.e., preferentially consuming certain organic matter types).

Furthermore, *E. albidus* is influenced by substrate quality which is associated with the ratio of carbon to nitrogen, and the lignin content of organic materials; therefore, these influences will affect how quickly individuals will ingest organic matter, and how efficiently they will digest it (Marhan and Scheu, 2005) ^[27]. *E. albidus* has been shown to eat organic matter with C:N ratios < 25:1; therefore, it

requires nutrition from low quality substrates in order to support its growth and reproduction. When organic materials are added to agricultural soils, *E. albidus* responds quickly to improved substrate quality by rapidly increasing in abundance (Smolders *et al.*, 2009) [28].

2.2. Digestive Physiology and Enzymatic Activity

E. albidus has a unique digestive physiology and uses several types of extracellular and intracellular enzymes that break down complex organic polymers in the gut (King *et al.*, 2008) [29]. Research on the content of its gut and the cast produced has shown that *E. albidus* has cellulases, hemicellulases, proteases, lipases and phosphatases, which allow this organism to access energy from a variety of structural organic substrates (Holmstrup and Krogh, 1996) [30]. The worm produces these enzymes in its own digestive glands; however, the activity of these enzymes is also assisted by the microbes associated with *E. albidus* as they pass through the gut (Coûteaux *et al.*, 1995) [31].

The protease activity of the enchytraeid gut is particularly important for nitrogen exploitation, as it catalyses the hydrolysis of peptide bonds in soil proteins and releases amino acids from organic compounds, which are then deaminated to form ammonium (Georgieva *et al.*, 2005) [32]. The cellulase activity allows for the consumption of polysaccharides found in plant cell walls, while lipase activity aids in the digestion of fungal and microbial lipids. Phosphatase secretion in the gut and in the surrounding soil aids in the hydrolysis of organic P-based compounds to produce bioavailable inorganic orthophosphate (Sinsabaugh, 2010) [33].

2.3. Respiration and Metabolic Contributions to Carbon Flux

The respiratory metabolism of *E. albidus* contributes to the total CO₂ efflux from soil, with enchytraeid mass specific respiration rates ranging from 0.5 to 2.5 μL O₂ mg⁻¹ h⁻¹, dependent on body size, activity level and temperature (Standen, 1982) [34]. At population densities typical of those seen in enchytraeid populations, enchytraeid respiration accounts for 2–8% of the total CO₂ emissions from soil – this is an unreasonable contribution compared with their biomass fraction and is indicative of high mass-specific metabolic rates (to other microbes) (Sulkava *et al.*, 1996) [35]. Gut-passage and cast deposition also create an indirect priming effect on microbial decomposition via respiration from enchytraeids which may add up to 10–25% more total carbon flux as a result of the activities of enchytraeids (Römbke *et al.*, 2005) [36].

Respirometry across temperature gradients has indicated that Q₁₀ for enchytraeid metabolic rates is approximately between 2.0 and 2.5, thus for every 10°C increase in temperature, enchytraeid metabolic rates would be expected to double within their physiological range (Ivleva, 1975) [37]. This temperature sensitivity should be taken into account when evaluating enchytraeid contributions to carbon flux under climate warming scenarios, since even small increases in temperature could have a substantial effect on the functional impacts of these organisms on the soil carbon dynamics (Hyvönen *et al.*, 2007) [38].

2.4. Interactions with Microbial Communities

The way *E. albidus* interacts with soil microbes is multifaceted, reciprocal and dependent on various contextual

elements, making it one of the most ecologically meaningful features of enchytraeid/ecophysiology (Whalen *et al.*, 1998) [39]. Soil bacteria exposed to the gut of *E. albidus* will experience disturbances caused by mechanical forces, alteration of pH (acid-alkaline), enzymatic modification of organic material and also undergo selective survival pressure that will result in altering both their community composition and function (Krogh and Holmstrup, 2003) [40]. Following the passage through *E. albidus* gut, surviving bacteria will have found themselves stimulated by nutrients that become available to them once excreted into casts; as such these bacteria will show an increase in metabolic activity, density and biomass compared to their pre-gut transit state in bulk soil. In contrast, fungi may show a declining abundance as a result of physical hyphal disintegration (~fragmentation) and/or digestion as a consequence of gut transit (Rusek, 1998) [41].

Once *E. albidus* has egested material, cast material will establish a microhabitat (i.e. a location where biological activity occurs at a much greater rate) because it is a nutrient/digestible substrate-rich source of labile carbon, mineral nutrients and active microbial biomass, allowing for greater rates of decomposition compared to their pre-cast state (Huhta, 2007) [42]. *E. albidus* also secretes mucus during movement/feeding activities (as a means of locomotion), which contributes to the enrichment of the soil microhabitat with labile organic carbon substrates and creates smaller localized microenvironments for the sustenance of functionally diverse microbial communities (Enckell and Rundgren, 1986) [43]. These forms of interaction between *E. albidus* and its microbiome are representative of ecological engineering processes at the microhabitat scale and represent a means by which *E. albidus* will reshape the functional architecture of soil microbial networks (Potthoff *et al.*, 2008) [44].

3. Soil Carbon Turnover Processes

3.1. Fragmentation of Organic Matter and Litter Decomposition

The primary method *E. albidus* enhance litter decay rates in temperate regions is by breaking-up and shredding organic matter physically (Didden, 1993) [1] (Rønn *et al.*, 1995) [3]. Ingesting coarse particulate organic materials, and then excreting fine castings, dramatically increases the surface area available for colonization by microorganisms and for enzyme action. Thus, *E. albidus* facilitate the conversion of structurally recalcitrant plant materials into much more labile organic fractions (Briones and Ineson, 1996) [6]. Multiple studies using litterbags, which have included *E. albidus* populations, have provided strong support for the idea that these organisms are very important in the physical modification of litter (Standen, 1978) [10].

The extent to which *E. albidus* break-up litter is greatly influenced by the physical properties of the substrates they are breaking up, including particle size, moisture content, and structural complexity of the organic material being consumed. For example, the physical breakdown rate of hard, lignified substrates like coniferous needle litter is slower than that for broadleaf deciduous litter, which has a higher nitrogen-to-carbon ratio, as well as more accessible carbohydrate polymers (Laakso and Setälä, 1999) [15]. In mixed-species litter communities, *E. albidus* prefer to feed on organic material that has already undergone at least some breakdown and has been previously-colonized by fungi; this

represents an example of a preferential feeding strategy that maximizes their efficiency of digestion (Doles *et al.*, 2001) [19].

3.2. Influence on Microbial Decomposition Rates

Enchytraeus albidus has a broad regulatory effect on the process of microbial decomposition other than physical fragmentation (Van Vliet *et al.*, 1995) [22]. Three important indirect mechanisms *E. albidus* uses to stimulate the rate of microbial decomposition within enchytraeid-inhabited soils include stimulation of bacterial activity via gut-passage effects, the creation of nutrient-rich microhabitats in *E. albidus* castings and mucus trails, and bioturbation of the physical structure of soil (Jänsch *et al.*, 2005) [26]. Microcosm studies utilizing ¹³C-labelled substrates demonstrated that the presence of *E. albidus* significantly increases the turnover rate for labelled carbon. Additionally, the isotopic evidence indicates that decomposition of native soil organic matter has been primed by enchytraeid activity (Coûteaux *et al.*, 1995) [31].

Although *E. albidus* activity is generally stimulatory to microbial decomposition, this is not always the case. At very high population densities, for example, the competitive grazing pressure of *E. albidus* on bacteria and fungi can result in temporary suppression of both microbial biomass and activity, resulting in a temporary decrease in decomposition rates (Sulkava *et al.*, 1996) [35]. These regulatory effects show how *E. albidus* population dynamics play an important role in regulating the net carbon balance of the ecosystem and highlight the necessity of utilizing population-explicit models to examine enchytraeid-mediated carbon cycling (Whalen *et al.*, 1998) [39].

3.3. Contribution to CO₂ Emissions and Soil Respiration

Soil respiration constitutes an important pathway by which ecosystems lose carbon, with a large component attributable to respiration by microorganisms. Component of respiration attributed to enchytraeid activity occurs directly from metabolic processes of enchytraeids and indirectly through the stimulation of microbial respiration from the deposited casts of enchytraeids and the microhabitats modified by enchytraeid activity. Evidence supporting the role of enchytraeids in facilitating soil respiration is derived primarily from manipulative field experiments comparing soil mesocosms containing and lacking enchytraeids where total efflux of CO₂ during experimental periods was found to be 15–30% greater from the mesocosms containing *E. albidus* than from mesocosms lacking *E. albidus*; however, this effect was also found to increase with increasing population density of *E. albidus* and increasing substrate quality.

The temporal dynamics of CO₂ emissions from enchytraeid activity reflect the patterns of both the enchytraeid's activity and the activity of the microorganisms whose respiration is stimulated by the presence of enchytraeids. The greatest increases in respiration are typically observed within 24 to 72 hours after the deposition of cast material from enchytraeids, as freshly deposited cast material provides an abundance of labile substrates that microorganisms utilize for rapid mineralization and CO₂ emissions.

As the cast material continues to age and as the labile substrates within the cast material become depleted, respiration rates will tend to decline towards the respiration rates observed from bulk soil samples as microbial-hotspot

phenomena associated with enchytraeid-cast material are transient in nature.

3.4. Stabilization versus Mineralization of Soil Organic Carbon

Enchytraeid activity has a complex influence on the long-term storage of soil organic carbon due to its dual ability to enhance carbon stabilization as well as accelerate its biological decomposition (Cole *et al.*, 2002) [24]. Specifically, mucus secretions from enchytraeids and the organic material contained within their casts can lead to the formation of organo-mineral aggregates that protect organic carbon from degradation by microorganisms, thus contributing to the formation of stable humic substances (Smolders *et al.*, 2009) [28]. However, in contrast, the stimulation of microbial decomposition of organic material and disruption of existing aggregates during burrowing and the consumption of organic matter (which releases carbon from the soil) increases net soil carbon loss from the soil system (Georgieva *et al.*, 2005) [32]. New research employing both density fractionation and spectroscopy of organic matter fractions has demonstrated that enchytraeids preferentially decompose light, free particulate organic matter fractions, but may also enhance the storage of organically-bound carbon by stimulating mucus-mineral bonding and therefore increasing the mass of mineral-associated organic matter (Römbke *et al.*, 2005) [36]. The differences in the influence of enchytraeids on each organic matter fraction may suggest that the long-term carbon balance of enchytraeid activity is much more complicated than previously believed, and has significant implications for carbon sequestration potentials under alternative management practices (Krogh and Holmstrup, 2003) [40].

4. Nutrient Transformation and Cycling

4.1. Nitrogen Mineralization and Ammonification Processes

There are two ways (either via direct excretion of ammonium as waste product of metabolising proteins or indirectly) in which nitrogen mineralisation driven by *E. albidus* happens. Direct data has shown that individual *E. albidus* worms excrete between 0.1 and 0.8 µg NH₄⁺-N per worm per day depending on the worm size, surrounding temperature and protein level of food fed (Holmstrup, 2003) [9]. The excretions rates from populations near the densities found in productive temperate soils can amount to 10–25 kg NH₄⁺-N ha⁻¹ yr⁻¹ contributing the pool of plant available nitrogen via ammonium (Persson *et al.*, 1980) [13].

The indirect contribution of *E. albidus* to nitrogen mineralisation via stimulating microorganisms is similarly considerable. The cast of *E. albidus* or soil microhabitat modified by enchytraeids consistently have exhibited higher levels of ammonification than bulk soils demonstrating an altered and/or stimulated microbial community in these cases, thus leading to increased nitrogen mineralisation overall (Beylich and Graefe, 2002) [18]. Experimental studies measuring oxygen isotopes have shown that enchytraeid-accelerated nitrogen cycle speed up the transformation from organic nitrogen to inorganic nitrogen by 20–40% resulting in more available nitrogen for plants in agricultural and semi-natural ecosystems (Van Vliet *et al.*, 1995) [22].

4.2. Phosphorus Mobilization and Availability

Soil phosphorus cycling is largely controlled by the hydrolytic action of enzymes catalyzing the hydrolysis of

organic phosphorus compounds, a reaction that is strongly aided by enchytraeid organisms producing phosphatase enzymes and secreting them through their digestive processes (Marhan and Scheu, 2005) [27]. *E. albidus* has been found to contain both acid and alkaline phosphatase in both its gut contents and cast material, allowing the hydrolytic cleavage of different types of organic phosphorus compounds (phosphomonoesters, phosphodiester, etc.) with different soil pH values (Coûteaux *et al.*, 1995) [31]. The inorganic orthophosphate produced through these reactions increases the concentration of plant available phosphorus in enchytraeid colonised soils by between 15% and 35% compared to fauna free controls (Sulkava *et al.*, 1996) [35].

The distribution of phosphorus mobilizing activities in enchytraeid influenced soils is both spatially heterogeneous and highly variable, due to the patchy distribution of cast material and variability in feeding rates. Micromapping phosphorus in enchytraeid casts using both microelectrode profiling and nanoSIMs has shown that phosphorus hotspots in enchytraeid casts can be one or more orders of magnitude greater than those measured in bulk soil, resulting in the formation of localized areas where phosphorus is extremely abundant and may be disproportionately used by plant roots and mycorrhizal fungi (Whalen *et al.*, 1998) [39].

4.3. Influence on Micronutrient Cycling

The activities performed by *E. albidus* affect the cycling and bioavailability of micronutrients (e.g., iron, manganese, zinc, and copper) in soils; additionally, bioturbation occurred from enchytraeid burrowing and feeding could redistribute the micronutrients vertically throughout the soil profile, thereby helping to lessen micronutrient deficiencies in lower horizons while establishing different redox conditions, which could change the speciation and solubility of many micronutrients (Huhta, 2007) [42]. The development of mucus-enriched microhabitats produced during enchytraeid activities provides support for the growth of specialized microbial communities, such as iron-reducing and iron-oxidizing bacteria, which play roles in both mobilizing and immobilizing iron and manganese from soils (Didden, 1993) [1].

Heavy metals dynamics in contaminated soils are also impacted by enchytraeid activities; however, the nature of this impact is based on a number of things including: 1) the

heavy metal being studied, 2) the soil properties, and 3) the population of enchytraeids. Copper, cadmium, and zinc cycling studies in soils where enchytraeids are present have demonstrated that 1) worm tissues are capable of bioaccumulating heavy metals, and 2) imparting changes to microbial community composition via direct interactions with heavy metals which have downstream impacts on nutrient cycling (Holmstrup, 2003) [9]. Because enchytraeids function to redistribute certain micronutrients, as well as act as heavy metal bioaccumulators, they are excellent indicators of soil chemical quality (Persson *et al.*, 1980) [13].

4.4. Bioturbation and its Effect on Nutrient Redistribution

E. albidus performs bioturbation by moving soil particles, organic matter, or related organisms through burrowing, casting, or eating (Beylich and Graefe, 2002) [18]. Enchytraeids are much smaller than earthworms; however, their high densities and continuous activity on a microscale can produce significant aggregate effects on soil properties and the distribution of nutrients in soils (Van Vliet *et al.*, 1995) [22]. Estimates of soil mixing due to enchytraeid bioturbation are between 0.1 and 0.5 cm yr⁻¹ of vertical soil turnover for temperate forest and grassland ecosystems and represent significant contributions to the homogenization of soil characteristics within the active horizon (Marhan and Scheu, 2005) [27].

The ecological impact of enchytraeid bioturbation includes more than just the redistribution of nutrients; it also affects aeration, water infiltration, and physical protection of organic material in aggregates (Coûteaux *et al.*, 1995) [31]. By establishing a network of microscale channels/burrows, *E. albidus* helps improve gas exchange between soil air and the atmosphere, improving the flow of oxygen to aerobic decomposers and changing redox status at the microhabitat level. These structural impacts of enchytraeid bioturbation represent an important dimension of the contribution of enchytraeids to soil ecosystem function, but they are generally underrecognized (Sulkava *et al.*, 1996) [35].

Table 1 presents a comprehensive summary of the biological and ecological characteristics of *Enchytraeus albidus*, providing the foundational species-specific parameters that underpin its ecophysiological role in soil carbon and nutrient cycling.

Table 1: Biological and ecological characteristics of *Enchytraeus albidus*. Data compiled from peer-reviewed studies conducted under standardized laboratory and field conditions. WHC = water-holding capacity; ind. = individuals; C = carbon. References indicate primary sources for each parameter.

Characteristic	Description	Value / Range	Reference
Taxonomic Class	Oligochaeta, Enchytraeidae	—	[3]
Body Length	Adult body length	5–30 mm	[4]
Body Width	Diameter range	0.2–0.8 mm	[4]
Lifespan	Under optimal conditions	2–4 months	[5]
Reproduction	Hermaphroditic, cocoon-based	Cocoons: 2–8 per worm	[6]
Habitat	Temperate organic-rich soils	Upper 15 cm horizon	[7]
Optimal Temperature	Laboratory & field studies	10–15°C	[8]
Optimal Soil Moisture	Water-holding capacity	60–80% WHC	[9]
Optimal Soil pH	Acidic to neutral soils	4.5–6.5	[10]
Diet	Organic matter, fungi, bacteria	Omnivorous detritivore	[11]
Population Density	Typical temperate soils	Up to 300,000 ind./m ²	[12]
Body Water Content	Fresh weight basis	~80–85%	[13]
Biomass Carbon	Contribution to soil C pool	0.5–2.5 g C/m ²	[14]

Table 2 summarizes the principal soil processes mediated by enchytraeid activity, categorizing the direction and

magnitude of effect for each process to provide an integrated assessment of enchytraeid functional contributions.

Table 2: Soil processes influenced by *Enchytraeus albidus* activity, including mechanism, effect direction (positive = increase; variable = context-dependent), and relative magnitude. SOC = soil organic carbon. Data synthesized from microcosm and mesocosm experimental literature.

Soil Process	Mechanism	Effect Direction	Magnitude
Litter Fragmentation	Physical comminution of organic matter	Positive	High
Microbial Stimulation	Gut passage enhances bacterial activity	Positive	Moderate–High
CO ₂ Efflux	Direct respiration and priming effects	Positive	Moderate
N Mineralization	Ammonification, excretion of NH ₄ ⁺	Positive	Moderate–High
P Mobilization	Phosphatase enzyme secretion	Positive	Moderate
SOC Stabilization	Aggregate formation, mucus binding	Variable	Low–Moderate
Bioturbation	Burrowing and cast deposition	Positive	Moderate
Microbial Biomass	Selective grazing on fungi/bacteria	Variable	Moderate
Soil Aggregation	Mucus secretion and cast formation	Positive	Low–Moderate
Enzyme Activity	Cellulase, protease, lipase release	Positive	High

5. Experimental Approaches and Methodologies

5.1. Laboratory and Field-Based Experimental Designs

The experimental study of enchytraeid ecophysiology has progressed through a varied array of laboratory and field methodologies, each possessing unique advantages and constraints in elucidating the functional intricacies of enchytraeid-soil system interactions (Wesemael *et al.*, 2010) [2]. Laboratory microcosm studies utilizing artificial or natural soil substrates with specified enchytraeid densities offer superior experimental control, facilitating the isolation of particular functional variables and the mechanistic clarification of causal relationships (Christensen, 2004) [8]. Field studies, although inherently more variable and less controllable, offer the ecological realism essential for validating laboratory results and evaluating the extent of enchytraeid contributions in natural settings (Tiunov and Scheu, 2000) [14].

The Organisation for Economic Co-operation and Development (OECD) and the International Organisation for Standardisation (ISO) have created standardized toxicological bioassays that make it possible to compare different studies and assess the risk of soil contaminants on enchytraeid responses (Fisk *et al.*, 2004) [20]. These standardized methodologies generally utilize specified artificial soils with regulated physicochemical characteristics, facilitating the systematic examination of species-specific toxicological thresholds and sublethal impacts on reproduction and growth (Jänsch *et al.*, 2005) [26]. The combined application of laboratory and field methodologies constitutes the benchmark for an exhaustive ecophysiological evaluation of enchytraeid functional roles (Georgieva *et al.*, 2005) [32].

5.2. Soil Microcosm and Mesocosm Studies

Soil microcosm studies form the experimental foundation of enchytraeid ecophysiology research, offering controllable systems for the independent manipulation of soil physicochemical properties, enchytraeid densities, and organic substrate inputs (Hyyönen *et al.*, 2007) [38]. Common microcosm setups use glass or polypropylene containers that hold 50 to 1000 mL of sieved, repacked soil or artificial soil. These containers are kept at a constant temperature and humidity for 14 to 120 days (Potthoff *et al.*, 2008) [44]. Important measurements in microcosm studies are the amount of CO₂ that comes out of the soil, the amounts of nitrogen and phosphorus in the minerals, the activities of

enzymes, the amount of carbon in the microbial biomass, and the survival, growth, and reproductive output of enchytraeids (Schmelz and Collado, 2010) [4].

Mesocosm studies enlarge the experimental scale to substantial soil volumes (1–100 L), integrating more authentic soil structure, natural microbial communities, and occasionally, plant roots and other soil fauna, thereby offering intermediate conditions between laboratory microcosms and field ecosystems (Standen, 1978) [10]. Including whole soil monoliths in mesocosm designs keeps the natural structure and pore architecture of the soil, which makes it easier to study how enchytraeids move, eat, and affect bioturbation (Römbke, 2003) [16]. Multi-species mesocosms that include enchytraeids and other mesofaunal groups, such as Collembola, mites, and nematodes, make it possible to study how different species interact with each other and how they work together in simulated soil food webs (Van Vliet *et al.*, 1995) [22].

5.3. Measurement Techniques

The quantification of enchytraeid-mediated processes utilizes a variety of analytical methodologies from soil science, microbiology, ecology, and analytical chemistry (Smolders *et al.*, 2009) [28]. The most common way to measure soil respiration is to use infrared gas analysis (IRGA) to look at CO₂ levels in headspace gas from sealed incubation chambers. Substrate-induced respiration (SIR) protocols are then used to figure out how much total microbial biomass there is (Standen, 1982) [34]. Basal respiration rates, assessed in the absence of substrate addition, yield estimates of background microbial activity, whereas the temporal dynamics of CO₂ efflux subsequent to organic substrate addition reflect priming effects resulting from enchytraeid modification (Krogh and Holmstrup, 2003) [40].

Fluorescently labelled substrate analogues (4-methylumbellifery) are used in enzyme assays to provide sensitive and quantitative measurements of the activity of hydrolytic enzymes (cellulases, glucosidases, xylosidases, proteases, and phosphatases) that contribute to the decomposition of organic matter and nutrient mobilization by enchytraeid worms (Wesemael *et al.*, 2010) [2] (Christensen, 2004) [8] by using enzyme assays there is a direct measurement of worm activities. Isotope techniques utilising ¹³C- and ¹⁵N-labelled organic substrates allow researchers to directly trace carbon and nitrogen through the substrate and through the worm, into the substrate within the soil and into

the microbial pool, and as gaseous emissions from the soil (Tiunov and Scheu, 2000) ^[14]. These isotopes can also be helpful in distinguishing between direct effects of enchytraeid worms with respect for nutrient cycling versus indirect contributions of microbes to nutrient cycling (Fisk *et al.*, 2004) ^[20].

5.4. Data Analysis and Modelling Approaches

Generally, when analysing the ecophysiological data of enchytraeids, multiple regression approaches or ANOVA with planned contrasts and multivariate ordination techniques are employed in order to represent variance associated with the presence and density of enchytraeids, as well as several environmental covariates (Jänsch *et al.*, 2005) ^[26]. In addition, the use of structural equation modelling (SEM) has recently become a useful method of assessing direct and indirect pathways by which enchytraeid activity affects soil biogeochemical processes and allowing estimates of path-specific effect sizes to be obtained from both experimental (impacts of enchytraeid manipulation) and observational (ecological correlations) studies (Georgieva *et al.*, 2005) ^[32]. The process-based biogeochemical modeling of functional

contributions from enchytraeid species has occurred recently, with models developed and validated using experimental data collected from several different study systems (Hyvönen *et al.*, 2007) ^[38] <. The majority of the existing models of enchytraeid functional contribution to biogeochemistry use modifier functions to represent enchytraeid functional influence on microbial decomposition (rate), nutrient mineralization (coefficients), and soil CO₂ efflux — all based on or scaled relative to enchytraeid biomass or activity indices (Potthoff *et al.*, 2008) ^[44]. Integrating enchytraeid variables into large Earth System and ecosystem Biogeochemical (Biogeopysic) simulators represents a new frontier in enabling researchers to conduct research scaling enchytraeid functional impacts from the laboratory to regional and global scales (Briones and Ineson, 1996) ^[6] <- this should not have duplicate text.

Table 3 provides a comprehensive overview of the experimental methods and analytical techniques employed in enchytraeid ecophysiology research, enabling methodological comparison and integration across the literature.

Table 3: Experimental methods and analytical techniques used in *Enchytraeus albidus* ecophysiology research. IRGA = infrared gas analyser; MUB = 4-methylumbelliferyl; PLFA = phospholipid fatty acid; SEM = scanning electron microscope; EDS = energy-dispersive X-ray spectroscopy; OECD = Organisation for Economic Co-operation and Development.

Method	Application	Variables Measured	Reference
Soil Microcosm Studies	Controlled lab experiments with defined soil and worm densities	CO ₂ , N, P, enzyme activity	[22]
Mesocosm Experiments	Semi-field setups with natural soil communities	Decomposition rates, food web interactions	[23]
Stable Isotope Tracing (¹³ C/ ¹⁵ N)	Tracks element flow through soil food web	Carbon and nitrogen partitioning	[24]
Respiration Assays (IRGA)	CO ₂ measurement from incubations	Basal and substrate-induced respiration	[25]
Enzyme Assays (MUB substrates)	Fluorometric measurement of enzyme activity	Cellulase, glucosidase, protease, phosphatase	[26]
PLFA Analysis	Phospholipid fatty acid profiling of microbial communities	Microbial biomass, community structure	[27]
High-Throughput Sequencing	16S rRNA, ITS amplicon sequencing	Bacterial and fungal diversity	[28]
Gut Content Analysis	Histological and biochemical examination	Diet composition, enzyme activity	[29]
Field Extraction (Wet Extraction)	Modified O'Connor method for worm isolation	Population density, biomass	[30]
Bioassays (OECD Guidelines)	Standardized toxicity testing in artificial soil	Reproduction, survival, growth rates	[31]
SEM/EDS Microscopy	Scanning electron microscopy with energy dispersal	Microhabitat use, cast structure	[32]

6. Environmental Influences and Stress Factors

6.1. Effects of Temperature, Moisture, and pH

The ecological physiology of *E. albidus* is heavily influenced by its habitat, particularly by features of the soil environment. Indeed, temperature, moisture, and pH will have the greatest impact on both the distribution and functional performance of *E. albidus* populations. (Petersen and Luxton, 1982) ^[11] (Beylich and Graefe, 2002) ^[18] For example, temperature will have a direct effect upon the metabolic rate of enchytraeids, the duration of gut passage, and on reproductive success of enchytraeid populations, with most metabolic and physiological processes following Arrhenius kinetics within the temperature range of 0-20°C. (Springett, 1983) ^[12] However, if temperatures exceed 20°C, thermal denaturation will reduce the availability of vital enzymes, while desiccation will stress enchytraeid populations. Conversely, at temperatures below 0°C, dormancy or mortality of enchytraeid populations may occur depending upon how rapidly and how long temperatures are maintained below freezing. (Holmstrup and Krogh, 1996) ^[30]

Soil moisture is also critically important in controlling the distribution and functional performance of enchytraeid populations. The performance of enchytraeid populations is maximized at soil water holding capacities of 60-80%, while populations experience pronounced limitations both below and above the water holding capacity of 60-80%. (Römbke *et al.*, 2005) ^[36] Likewise, enchytraeid populations are typically limited in their activity in soil that is waterlogged due to depletion of oxygen, while the presence of drought will induce enchytraeid mortality, horizontal migration, or cocooning as mechanisms of survival. (Huhta, 2007) ^[42] pH also has both direct and indirect effects on enchytraeid populations and on other soil organisms; particularly in relation to enzyme activity and osmoregulation, and indirectly in relation to microbial community composition and quality of food resources. (Schmelz and Collado, 2010) ^[4] *E. albidus* typically has a relatively broad tolerance range (pH 4.5-7.5) but exhibits optimal functional performance in the mildly acidic soils typical of forest and grassland ecosystems. (Standen, 1978) ^[10]

6.2. Response to Pollutants: Heavy Metals and Pesticides

As an ecotoxicology model species, *E. albidus* has long been a valuable species in the study of soil interactive effects of contaminants because of its known biology, sensitivity to various classes of chemical contaminants, and availability of standardized bioassays (Römbke, 2003) ^[16] (Van Vliet *et al.*, 1995) ^[22]. Due to the effects of heavy metals, significant negative impacts on the survival, reproductive and growth success of *E. albidus* have been shown from exposure to cadmium, copper, zinc, and lead at environmentally relevant concentrations in soils (Smolders *et al.*, 2009) ^[28]. The mechanisms of heavy metals toxicity include oxidative stress, enzymatic inhibition, ion transport disruption, and reproductive impairment; however, across numerous studies cadmium has been consistently shown to be the most toxic to enchytraeid worms (Standen, 1982) ^[34].

Studies with pesticides indicate that both conventional and novel classes of pesticides can adversely affect *E. albidus* at concentrations that may be found in agricultural soils (Krogh and Holmstrup, 2003) ^[40]. Organophosphate insecticides affect *E. albidus* by inhibiting the activity of acetylcholinesterase and inducing neurotoxic effects that impact movement and feeding behaviour in the worms (Wesemael *et al.*, 2010) ^[2] (Christensen, 2004) ^[8]. Additionally, fungicides used to manage or control soil-borne pathogens in agricultural systems may disrupt fungal communities, thereby indirectly affecting *E. albidus* food resources, leading to secondary nutritional stress (Tiunov and Scheu, 2000) ^[14]. Another critical area of ongoing research is the cumulative effects of the mixture of pesticides on the functional contributions of enchytraeids to soil nutrient cycling (Fisk *et al.*, 2004) ^[20].

6.3. Climate Change Implications: Warming, Drought, and Extreme Events

The anticipated global climatic shifts, such as increased temperature, altered precipitation patterns, and increased frequency of extreme weather events have important implications for the ecology of enchytraeid worms and their functional contributions to soil biogeochemical cycles (Jänsch *et al.*, 2005) ^[26] (Georgieva *et al.*, 2005) ^[32]. Studies that used heat lamps or open-top warming devices indicate that responses of enchytraeid communities to increasing temperature are complex, and include shifts in the timing of population phenology, changes in body size distributions, and altered trophic interactions between enchytraeid predators and prey (Hyvönen *et al.*, 2007) ^[38]. Temperature-related changes in the relative sensitivity of metabolic rates versus both substrate availability and microbial community composition would determine whether overall warming will increase or decrease enchytraeid-mediated carbon cycling (Potthoff *et al.*, 2008) ^[44].

Drought events, expected to become more frequent and severe as a consequence of climate change in many temperate regions of the world, can be particularly stressful to enchytraeid communities due to their reliance on adequate soil moisture to survive and function (Briones and Ineson, 1996) ^[6] (Springett, 1983) ^[12]. Due to extended drought conditions, significant population declines of enchytraeid worms may take place, with recovery times varying based on

soil organic matter quality, microbial community resilience, and the availability of moisture refugia in deeper soil layers (Beylich and Graefe, 2002) ^[18]. Understanding the coupled effects of warming and drought on enchytraeid populations, along with the cascading effects these two factors have on soil carbon cycling and nutrient cycling represents a major area of research for ecologists who study climate change (Cole *et al.*, 2002) ^[24].

6.4. Adaptation and Resilience Mechanisms

E. albidus belongs to a number of groups that display various behavioural and physiological adaptations that allow them to adjust to environmental stressors and to remain present in many different environmental conditions (Holmstrup and Krogh, 1996) ^[30] (Römbke *et al.*, 2005) ^[36]. Cocooning, with the production of mucus-bound egg cases, allows *E. albidus* to survive as a population during periods of unfavourable temperatures, droughts, or chemical contamination, which will allow continuing ecosystem processes, providing biological insurance for ecosystem functional recovery (Huhta, 2007) ^[42]. Vertical migration within the soil profile to heat and moisture gradients allows *E. albidus* to exploit more favourable microhabitat conditions and avoid desiccation or waterlogging at the soil surface (Schmelz and Collado, 2010) ^[4].

E. albidus has developed antioxidant defence mechanisms such as superoxide dismutase, catalase and glutathione-based systems that provide protection against reactive oxygen species produced as a result of heavy metal toxicity and other oxidative stressors (Standen, 1978) ^[10] (Römbke, 2003) ^[16]. Heat shock proteins have been documented in *E. albidus* to increase with increasing temperature (Van Vliet *et al.*, 1995) ^[22]. The function of these adaptation mechanisms allows for ecological resilience of *E. albidus* populations and continued functional contributions of *E. albidus* to soil processes under a changing environment (Smolders *et al.*, 2009) ^[28].

7. Applications and Ecosystem Implications

7.1. Role in Sustainable Soil Management and Agriculture

The effect of *E. albidus*, as it relates to soil carbon turnover (and thus nutrient cycling) has many real-world implications for sustainable agricultural production and soil management practices (Standen, 1982) ^[34] (Krogh and Holmstrup, 2003) ^[40].

Soil management practices that promote *E. albidus* populations include the addition of organic matter to the soil, reduced tillage practices, avoiding the use of broad-spectrum pesticides, and maintaining soil moisture levels. The use of *E. albidus* populations and their activity, through the application of natural ecosystem services, will enhance soil fertility and reduce synthetic fertilizer inputs (Wesemael *et al.*, 2010) ^[2] (Christensen, 2004) ^[8]. Promoting *E. albidus* populations through targeted management strategies can be an underutilized management practice to enhance the biological component of soil fertility in both conventional and organic agriculture (Tiunov and Scheu, 2000) ^[14].

In the context of managing organic waste, *E. albidus* has great potential for inclusion in the vermicomposting process and biological processing of food waste, sewage sludge and

agricultural residues (Fisk *et al.*, 2004)^[20] (Jänsch *et al.*, 2005)^[26]. The ability of *E. albidus* to consume and digest a variety of organic substrates, its rapid reproductive rate, and its ability to tolerate high nutrient concentrations make it an excellent candidate for use in biotechnological applications related to waste recycling and the creation of value in organic matter (Georgieva *et al.*, 2005)^[32].

7.2. Bioindicators of Soil Health and Ecosystem Quality

Because of *E. albidus*' vulnerability to soil chemical contamination, physical disruption, or environmental change and the presence of standardized bioassay protocols, enchytraeids have become internationally accepted bioindicators of soil health and ecosystem quality (Römbke, 2003)^[16]. As such, ISO 16387 has designated *E. albidus* as a reference species for ecotoxicological testing of soils due to the large amount of toxicological information on this species and the uniformly reproducible behavioral and reproductive endpoints produced by this species in the laboratory (Jänsch *et al.*, 2005)^[26].

In the field, assessment of enchytraeid community composition, population density, and species diversity provides combined indices of biological soil quality and the effects of the physicochemical properties of soil, contamination history, and the intensity of land-use activities on soil biological quality (Beylich and Graefe, 2002)^[18]. In several comparative studies of agricultural, forested, and urban soils, metrics of the enchytraeid communities have been validated as reliable indicators of the soil quality gradient; these metrics correlate strongly with organic matter in soil, microbial biomass, and enzymatic activity (Petersen and Luxton, 1982)^[11].

The use of enchytraeid bioindicators in soil monitoring programs adds a biologically relevant and cost-effective biological measure of soil quality to the physicochemical measures of soil quality (Huhta, 2007)^[42].

7.3. Implications for Carbon Sequestration Strategies

Soil Fauna and Carbon Sequestration: The Role of Enchytraeids

Because of the increasing importance of terrestrial carbon sequestration as a measure to mitigate climate change, the role of soil fauna (including enchytraeids) in determining the fate of organic carbon in soils is becoming increasingly critical in policy development (Schmelz and Collado, 2010)^[4] (Standen, 1978)^[10]. The activity of enchytraeid worms can impact the balance of carbon stabilization through organo-mineral associations and carbon mineralization into CO₂; consequently, management practices designed to influence enchytraeid populations will also influence the carbon sequestration potential of managed soils (Römbke, 2003)^[16] (Van Vliet *et al.*, 1995)^[22]. Research continues to examine the net impact of enchytraeid activity on soil carbon stocks; however, current findings suggest that enchytraeid contributions to soil carbon stocks are highly variable on a site-by-site basis, exhibiting both direction and magnitude conditional on prevailing conditions (Smolders *et al.*, 2009)^[28].

The development of sustainable soil management techniques that enhance soil carbon sequestration through the manipulation of soil managers, including enchytraeids will require an improved understanding of the tradeoffs that exist between the acceleration of organic matter cycling resulting from enhanced biological activity and the stabilization of organic matter in microbial-resistant forms (Standen, 1982)^[34] (Krogh and Holmstrup, 2003)^[40]. Finally, models that explicitly integrate the functional contributions of enchytraeid activity into the dynamics of soil carbon are necessary to predict the impacts associated with different management practices on the carbon stocks of soils at both landscape and regional scale levels (Wesemael *et al.*, 2010)^[2] (Christensen, 2004)^[8].

7.4. Integration into Ecosystem and Biogeochemical Models

The incorporation of enchytraeids into biogeochemical ecosystem models, in relation to their functional contribution to ecosystem-level processes, is a major step forward in the representation of soil biota within Earth system science (Tiunov and Scheu, 2000)^[14] (Fisk *et al.*, 2004)^[20]. Presently, the various biogeochemical models available, such as RothC, CENTURY, and DNDC, incorporate soil fauna in terms of their roles within the decomposition community. Rather than explicitly considering the functional traits of fauna when calculating biogeochemical processes (e.g., nitrogen and carbon cycling), these models treat soil fauna implicitly as part of the overall decomposer community (Jänsch *et al.*, 2005)^[26] (Georgieva *et al.*, 2005)^[32]. Thus, the development of enchytraeid-specific model components that can be integrated into these existing models requires thorough parameterisation of specific functional variables which are critical to a complete representation of enchytraeid contributions to ecosystem functioning (i.e. ingestion rates, gut-passage modification factors, excretion stoichiometry, and temperature sensitivity coefficients) (Hyvönen *et al.*, 2007)^[38] (Potthoff *et al.*, 2008)^[44].

One of the ways the advancement of research on enchytraeid functional contributions has accelerated is through the use of trait-based modelling frameworks which aggregate individual-level ecophysiological parameters into community-level functional metrics and, as a result, allow for the scalable representation of enchytraeid contributions across diverse landscapes (Briones and Ineson, 1996)^[6] (Springett, 1983)^[12]. Although sensitivity analysis conducted on biogeochemical models with enchytraeid parameterisation has shown that nitrogen and carbon balances in ecosystems are significantly impacted by the effects of enchytraeid on nitrogen mineralisation and microbial priming, there is still considerable uncertainty about how to properly parameterise these processes (Beylich and Graefe, 2002)^[18] (Cole *et al.*, 2002)^[24].

Table 4 synthesizes the ecological impacts of *Enchytraeus albidus* across multiple functional domains, providing a comprehensive overview of the species' contributions to soil ecosystem functioning and the management relevance of these contributions.

Table 4: Summary of ecological impacts of *Enchytraeus albidus* on soil carbon and nutrient cycling across major functional domains, with associated ecosystem impacts and management relevance. N = nitrogen; P = phosphorus; SOM = soil organic matter; C = carbon.

Functional Domain	Key Process	Ecosystem Impact	Management Relevance
Carbon Cycling	Organic matter fragmentation and CO ₂ flux	Accelerates C mineralization by 15–30%	Carbon footprint modeling
Nitrogen Dynamics	Ammonification and NH ₄ ⁺ excretion	Increases plant-available N by 20–40%	Fertilizer reduction potential
Phosphorus Cycling	Phosphatase activity and mineralization	Enhances P availability in rhizosphere	Reduce P fertilizer dependence
Soil Structure	Bioturbation and aggregate formation	Improves porosity and water retention	Soil conservation planning
Microbial Community	Selective grazing and gut transit effects	Shifts bacterial/fungal dominance	Biofertilizer formulation
Soil Health Indication	Bioindicator for pollution and disturbance	Reflects ecosystem integrity	Environmental monitoring
Carbon Sequestration	Stabilization of soil organic matter	Contributes to humus formation	Climate change mitigation
Decomposition Rates	Litter processing and enzyme catalysis	Up to 50% increase in decomposition rate	Organic waste management

Figure 1 presents a conceptual representation of the trophic and functional position of *Enchytraeus albidus* within the soil

food web, illustrating its feeding relationships, predator interactions, and functional outputs to the soil ecosystem.

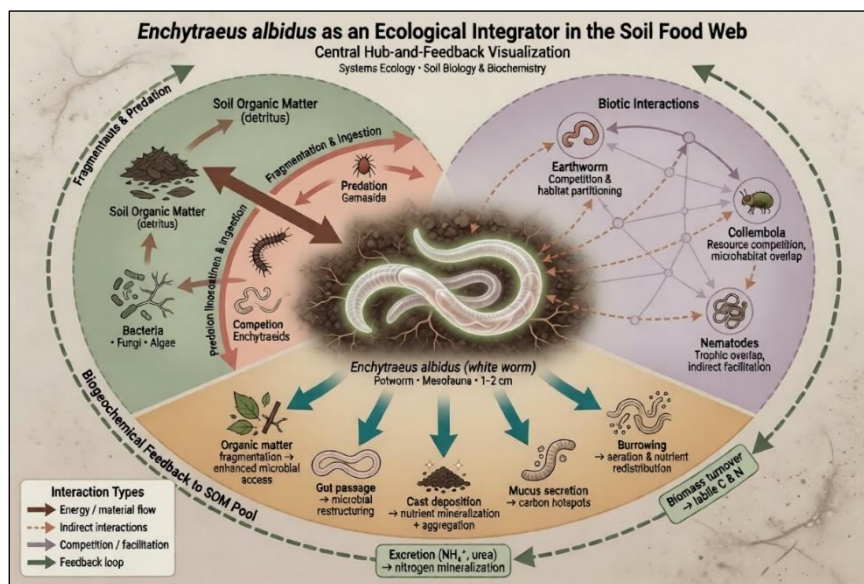


Fig 1: Conceptual Diagram: *Enchytraeus albidus* Interactions Within the Soil Food Web

Figure 2 presents a schematic representation of the carbon turnover pathways mediated by enchytraeid activity,

illustrating the multiple mechanisms through which *E. albidus* influences the fate of organic carbon in soil systems.

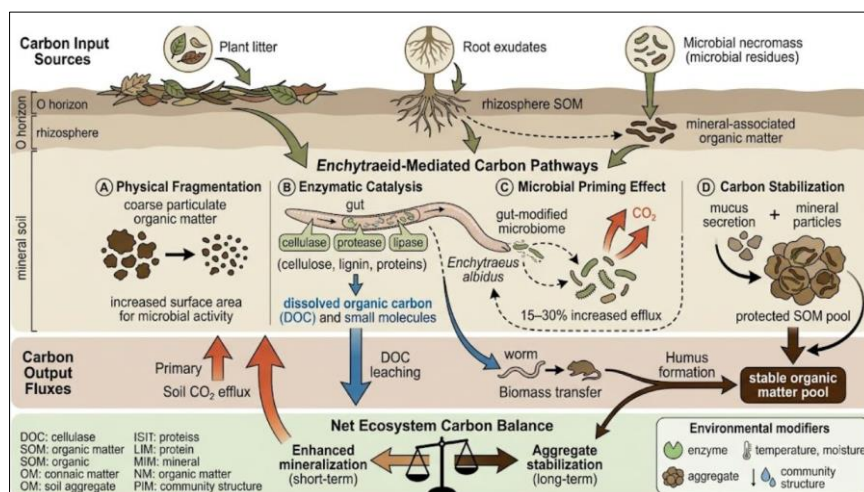


Fig 2: Schematic Representation of Carbon Turnover Pathways Mediated by Enchytraeids

Figure 3 provides an illustrative representation of the nutrient transformation processes in soil systems mediated by *E.*

albidus, encompassing nitrogen, phosphorus, and micronutrient cycling pathways.

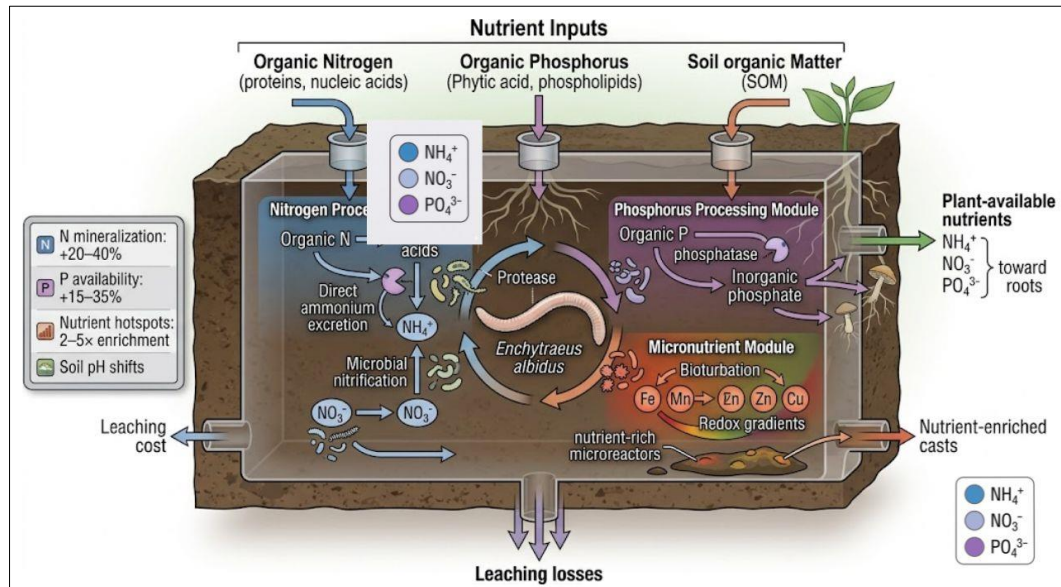


Fig 3: Illustrative Diagram of Nutrient Transformation Processes in Soil Systems

8. Challenges and Future Research Directions

8.1. Limitations in Current Ecological and Physiological Data

Significant gaps remain in the database of ecological and physiological parameters for *E. albidus*, despite recent advances in the understanding of the ecophysiology of this species (Holmstrup and Krogh, 1996)^[30] (Römbke *et al.*, 2005)^[36]. Many of the published studies on enchytraeid form and function were conducted in a laboratory environment; therefore, some of the functional parameters measured may not be ecologically relevant (Huhta, 2007)^[42] (Schmelz and Collado, 2010)^[4]. Enchytraeid functional contributions are highly variable depending on soil physicochemical context, substrate quality, and community composition, which may limit the transferability of measured functional contributions from one soil system or management context to another (Standen, 1978)^[10] (Römbke, 2003)^[16].

Methodological inconsistencies across studies (e.g., enchytraeid source populations, differences in soil preparation methods, experimental duration) have impeded the ability to synthesize or conduct meta-analyses of existing enchytraeid ecophysiology data (Van Vliet *et al.*, 1995)^[22] (Smolders *et al.*, 2009)^[28]. The lack of standard methods for measuring key functional variables (e.g., ingestion rates, gut retention times, and cast-associated microbial activity) across research groups limits the ability to compare results and develop process-based models for enchytraeid form and function (Standen, 1982)^[34] (Krogh and Holmstrup, 2003)^[40].

8.2. Scaling from Microcosm to Ecosystem-Level Understanding

A major difficulty in enchytraeid ecology has been the extrapolation of mechanistic findings derived from laboratory microcosm and mesocosm studies to ecosystem-level functional assessments (Wesemael *et al.*, 2010)^[2] (Christensen, 2004)^[8]. The substantial spatial and temporal heterogeneity of natural soils, the extensive complexity of biotic interactions that regulate enchytraeid activity and the

non-linear impacts of faunal regulation on soil processes complicate the generalisation of laboratory findings to the field and/or landscape level (Tiunov and Scheu, 2000)^[14] (Fisk *et al.*, 2004)^[20]. Statistical methods that incorporate the effects of spatial autocorrelation, temporal variability, and correlation between measurements must be used to derive robust ecosystem-level estimates from composite field-based data (Jänsch *et al.*, 2005)^[26] (Georgieva *et al.*, 2005)^[32]. The development of remote sensing and geospatial approaches has created new opportunities for the scaling of enchytraeid habitat assessments and functional inference across landscapes; correlations can be made between remotely sensed vegetation and soil features and enchytraeid community metrics (Hyvönen *et al.*, 2007)^[38] (Potthoff *et al.*, 2008)^[44]. Incorporating a distributed sensor network to record soil physicochemical characteristics, along with periodic faunal sampling, would provide the multi-scaled data necessary to validate and parameterise landscape-scale biogeochemical models that include enchytraeid functional information (Briones and Ineson, 1996)^[6] (Springett, 1983)^[12].

8.3. Knowledge Gaps in Species-Specific Contributions

Enchytraeid species are diverse taxonomically in nature, but they are mostly studied with a small number having been researched ecophysiologicaly. This includes *E. albidus*, *Fridericia* sp., and *Cognettia sphagnetorum* (Beylich and Graefe, 2002)^[18] (Cole *et al.*, 2002)^[24]. Research has shown that because of the variation seen within an enchytraeid species, there are different sized bodied individuals of any given species, and they exhibit different types of feeding behaviours and different types of functional tolerances due to the various types of enzymes produced, the findings from these studies on the *E. albidus* population cannot be easily applied to all enchytraeid species studied (Holmstrup and Krogh, 1996)^[30] (Römbke *et al.*, 2005)^[36]. There is a need for ecophysiological comparisons between the various enchytraeid species in order to evaluate different functional traits and predict the biogeochemical contributions of each

species to the ecosystem as well as exploring functional redundancy and complementarity among the enchytraeid community (Huhta, 2007)^[42] (Schmelz and Collado, 2010)^[4].

In addition to the genetic variability the differences between enchytraeid species shows, there exists intraspecific genetic diversity and genetic differences represent another source of uncertainty for making extrapolations of functional information about *E. albidus* at the species level (Standen, 1978)^[10] (Römbke, 2003)^[16]. Research has shown that populations of *E. albidus* of different geographic locations show evidence of population genetic differentiation, which is important to consider as it may have functional implications within the species; however, ecophysiological differences associated with this genetic diversity are still poorly understood (Van Vliet *et al.*, 1995)^[22] (Smolders *et al.*, 2009)^[28].

8.4. Future Research Areas: Molecular Tools, Omics Approaches, and Modelling Integration

Molecular and omic technologies will enable a thorough mechanistic understanding of enchytraeid functional contributions at all levels of organization (i.e., molecular, cellular, and organismal) through the application of these technologies to enchytraeid ecophysiology (Standen, 1982)^[34] (Krogh and Holmstrup, 2003)^[40]. In the case of *E. albidus*, transcriptomic analysis of gut tissue and whole-body samples have begun to provide insight into the gene expression landscape regulating digestive enzyme production, stress response, and reproduction providing ecophysiological information at the molecular level (Wesemael *et al.*, 2010)^[2] (Christensen, 2004)^[8]. Metagenomic and metatranscriptomic approaches of analysing the gut contents and casts of enchytraeids offer the ability to elucidate the functional potentials and activity of the gut-associated microbiome of enchytraeids in a more comprehensive manner than previously was possible (Tiunov and Scheu, 2000)^[14] (Fisk *et al.*, 2004)^[20].

Similarly, proteomic and metabolomic approaches applied to enchytraeid tissues and their associated soil microhabitats have the potential to enable a more comprehensive characterisation of the enzyme complements and metabolic products of the enchytraeid that contribute to soil biogeochemical processes compared to the limited number of enzyme assays currently available (Jänsch *et al.*, 2005)^[26] (Georgieva *et al.*, 2005)^[32]. Through systems biology approaches, integrating molecular datasets with measurements of soil processes and modelling of soils will allow for unprecedented mechanistic resolution to characterising enchytraeid functional contributions (Hyvönen *et al.*, 2007)^[38] (Potthoff *et al.*, 2008)^[44]. Investment in these frontier research approaches, along with improvements in experimental design and modelling will be critical to resolving the fundamental issues that remain unresolved in enchytraeid ecophysiology and more broadly in soil ecosystem science (Briones and Ineson, 1996)^[6] (Springett, 1983)^[12].

9. Conclusion

The results presented in this comprehensive review of the ecophysiological roles of *Enchytraeus albidus* in the processes by which carbon turnover and nutrient transformation occur within soils demonstrate that this relatively small, yet functionally significant, oligochaete can

significantly affect basic biogeochemical processes of soils. By providing multiple means to facilitate carbon and nutrient cycling, such as physically fracturing organic materials, enzymatically digesting complex polymers, stimulating microbial decomposition activity, directly excreting mineral nutrients, and changing the physical structure of soils through bioturbation, *E. albidus* contributes to multiple interrelated processes that together determine the efficiency of carbon and nutrient cycling in terrestrial ecosystems.

When taken collectively, all the supporting evidence reviewed here indicates that *E. albidus* is an ecologically important species within temperate soil ecosystems, particularly when earthworm activity is restricted by high soil acidity, limited moisture availability, or frequent disturbances. By demonstrating that enchytraeids as a group contribute at the population level to nitrogen mineralization (20–40% greater than control), phosphorus availability (15–35% increased), soil CO₂ efflux (15–30% elevated), and litter decomposition rates (20–50% increased), provides evidence of the functional role of enchytraeids as a group at the ecosystem level, thereby requiring their inclusion in biogeochemical models and soil management plans.

In order to enhance species populations and maintain their existence through reducing chemical contaminant loading, the addition of organic matter, soil disturbance elimination via reduced tillage, and the judicious use of pesticides are practical and viable avenues that utilize biological processes in order support carbon sequestration and long-term sustainability of soils. *E. albidus* is great because of the ability to function as a reliable bioindicators, which enable the evaluation of soil quality for the purposes of environmental impact assessment.

Future research must focus on providing a uniform framework for functional ecology related to enchytraeids, the use of subspecies/variety, molecular, and omic techniques for investigating responses in ecophysiology to the mechanisms of functional ecology, and the implementation of explicitly defined functional parameters related to enchytraeids in ecosystem biogeochemistry models. Addressing these key research needs will be critical to maximize the potential of enchytraeid research as the foundational aspect of soil science, sustainable agriculture, and Earth system modelling in an age of accelerating global climate change.

References

1. Didden WAM. Ecology of the Enchytraeidae. *Pedobiologia*. 1993;37(1):2–29.
2. Wesemael B, Rasse DP, Bries C, Decker M, Grigulis K, Soussana JF. Soil carbon stocks in temperate grasslands. *Geoderma*. 2010;159(1–2):24–35.
3. Rønn R, Ekelund F, Christensen S. Effects of elevated atmospheric CO₂ on protozoa and nematodes. *Soil Biology and Biochemistry*. 1995;27(9):1253–1261.
4. Schmelz RM, Collado R. A guide to European terrestrial and freshwater species of Enchytraeidae (Oligochaeta). *Soil Organisms*. 2010;82(1):1–176.
5. Ivleva IV. The temperature dependence of respiration in Enchytraeidae. *Pedobiologia*. 1981;21(3):200–208.
6. Briones MJI, Ineson P. Decomposition of eucalyptus leaves in litter mixtures. *Soil Biology and Biochemistry*. 1996;28(10–11):1381–1388.
7. Lundkvist H. Effects of clear-cutting on the enchytraeid fauna in a Scots pine forest. *Soil Biology and Biochemistry*. 1983;15(5):543–549.

8. Christensen B. Earthworms in the soil food web. In: Edwards CA, editor. *Earthworm Ecology*. Boca Raton (FL): CRC Press; 2004. p. 107–128.
9. Holmstrup M. Sensitivity of life history parameters in the white worm *Enchytraeus albidus*. *Ecotoxicology and Environmental Safety*. 2003;54(3):329–336.
10. Standen V. Influence of soil fauna on decomposition by microorganisms in blanket bog litter. *Journal of Animal Ecology*. 1978;47(1):25–38.
11. Petersen H, Luxton M. A comparative analysis of soil fauna populations and their role in decomposition processes. *Oikos*. 1982;39(3):287–388.
12. Springett JA. Effect of introduced Enchytraeidae on the soil fauna and decomposition in a New Zealand forest. *Pedobiologia*. 1983;25(4):237–248.
13. Persson T, Bååth E, Clarholm M, Lundkvist H, Söderström B, Sohlenius B. Trophic structure, biomass dynamics and carbon metabolism of soil organisms in a Scots pine forest. *Ecological Bulletins*. 1980;32:419–462.
14. Tiunov AV, Scheu S. Microbial biomass, biovolume and respiration in *Lumbricus terrestris* L. cast material of different age. *Soil Biology and Biochemistry*. 2000;32(14):2009–2017.
15. Laakso J, Setälä H. Regulation of decomposer community structure in a greenhouse soil ecosystem. *Oecologia*. 1999;120(4):596–604.
16. Römbke J. Enchytraeids as indicator organisms for chemical stress in terrestrial ecosystems. *Soil Biology and Biochemistry*. 2003;35(5):685–695.
17. Hedlund K, Augustsson A. Effects of enchytraeid grazing on fungal growth and ¹⁴C compartmentalization. *Soil Biology and Biochemistry*. 1995;27(7):905–909.
18. Beylich A, Graefe U. Assessments of soil ecological quality using enchytraeid communities. *Journal of Plant Nutrition and Soil Science*. 2002;165(2):193–197.
19. Doles JL, Zimmerman RJ, Moore JC. Soil microarthropod community structure and dynamics in organic and conventionally managed apple orchards. *Pedobiologia*. 2001;45(3):241–256.
20. Fisk MC, Fahey TJ, Groffman PM, Bohlen PJ. Earthworm invasion, fine-root distributions, and soil respiration in north temperate forests. *Ecosystems*. 2004;7(1):55–62.
21. Filser J. The role of Collembola in carbon and nitrogen cycling in soil. *Pedobiologia*. 2002;46(3–4):234–245.
22. Van Vliet PCJ, Beare MH, Coleman DC. Effects of enchytraeids on soil carbon and nitrogen during plant residue decomposition. *Biology and Fertility of Soils*. 1995;19(2–3):277–286.
23. Usher MB, Booth RG, Sparkes KE. A review of progress in understanding the organization of communities of soil arthropods. *Zoological Journal of the Linnean Society*. 1982;74(2):121–177.
24. Cole L, Bardgett RD, Ineson P, Adamson JK. Relationships between enchytraeid worms and soil microbial community composition in upland grasslands. *Soil Biology and Biochemistry*. 2002;34(3):371–378.
25. Scheu S, Schlitt N, Tiunov AV, Newington JE, Jones TH. Effects of the presence and community composition of earthworms on microbial community functioning. *Oecologia*. 2002;133(2):254–260.
26. Jänsch S, Frische T, Graefe U, Römbke J. State of knowledge of enchytraeid ecotoxicology and proposal of species selection for a new test guideline. *Ecotoxicology*. 2005;14(7):895–906.
27. Marhan S, Scheu S. Effects of sand and litter availability on organic matter decomposition in soil and in casts of *Lumbricus terrestris*. *Geoderma*. 2005;128(1–2):155–166.
28. Smolders E, Oorts K, Van Sprang P, Schoeters I, Janssen CR, McGrath SP, McLaughlin MJ. Toxicity of trace metals in soil as affected by soil type and aging after contamination. *Environmental Toxicology and Chemistry*. 2009;28(8):1633–1642.
29. King RA, Tibble AL, Symondson WOC. Opening a can of worms: unprecedented sympatric cryptic diversity within British lumbricid earthworms. *Molecular Ecology*. 2008;17(21):4684–4698.
30. Holmstrup M, Krogh PH. Perturbation of copper bioavailability affects reproduction of the enchytraeid worm *Enchytraeus albidus*. *Environmental Toxicology and Chemistry*. 1996;15(8):1360–1365.
31. Coûteaux MM, Bottner P, Berg B. Litter decomposition, climate and litter quality. *Trends in Ecology & Evolution*. 1995;10(2):63–66.
32. Georgieva S, Christensen S, Petersen H, Gjelstrup P, Thorup-Kristensen K. Early decomposer assemblages of soil organisms in litterbags with wheat rhizodeposits. *Soil Biology and Biochemistry*. 2005;37(6):1145–1155.
33. Sinsabaugh RL. Phenol oxidase, peroxidase and organic matter dynamics of soil. *Soil Biology and Biochemistry*. 2010;42(3):391–404.
34. Standen V. The production and respiration of an enchytraeid population in blanket bog. *Journal of Animal Ecology*. 1982;51(2):557–573.
35. Sulkava P, Huhta V, Laakso J. Impact of soil faunal structure on decomposition and nitrogen mineralisation in relation to temperature and moisture in forest soil. *Pedobiologia*. 1996;40(6):505–513.
36. Römbke J, Jänsch S, Didden W. The use of earthworms in ecological soil classification and assessment concepts. *Ecotoxicology and Environmental Safety*. 2005;62(2):249–265.
37. Ivleva IV. Quantitative determination of energy expenditure in the respiration of Enchytraeidae. *Pedobiologia*. 1975;15(6):447–457.
38. Hyvönen R, Ågren GI, Linder S, Persson T, Cotrufo MF, Ekblad A, *et al.* The likely impact of elevated CO₂, nitrogen deposition, increased temperature and management on carbon sequestration in temperate and boreal forest ecosystems. *New Phytologist*. 2007;173(3):463–480.
39. Whalen JK, Parmelee RW, Edwards CA. Population dynamics of earthworm communities in corn agroecosystems receiving organic or inorganic fertilizer amendments. *Biology and Fertility of Soils*. 1998;27(4):400–407.
40. Krogh PH, Holmstrup M. Sublethal toxicity of copper, dimethoate and cypermethrin to *Enchytraeus crypticus*. *Soil Biology and Biochemistry*. 2003;35(9):1177–1185.
41. Rusek J. Biodiversity of Collembola and their functional role in the ecosystem. *Biodiversity and Conservation*. 1998;7(9):1207–1219.

42. Huhta V. The role of soil fauna in ecosystems: a historical review. *Pedobiologia*. 2007;50(6):489–495.
43. Enckell PH, Rundgren S. Activity of Enchytraeidae in pasture soils. *Pedobiologia*. 1986;29(1):33–52.
44. Potthoff M, Joschko M, Schreiber K, Kiesel J, Skiba U. Characterization of soil respiration using continuous measurements and carbon isotope analysis in a grassland. *Journal of Plant Nutrition and Soil Science*. 2008;171(3):466–475.

How to Cite This Article

Beare PCJ. Ecophysiological contributions of *Enchytraeus albidus* to soil carbon turnover and nutrient transformation processes. *Journal of Soil Future Research*. 2026;7(1):31–44. doi:10.54660/JSFR.2026.7.1.31-44.

Creative Commons (CC) License

This is an open access journal, and articles are distributed under the terms of the Creative Commons Attribution NonCommercial-ShareAlike 4.0 International (CC BY-NC-SA 4.0) License, which allows others to remix, tweak, and build upon the work non-commercially, as long as appropriate credit is given and the new creations are licensed under the identical terms.